

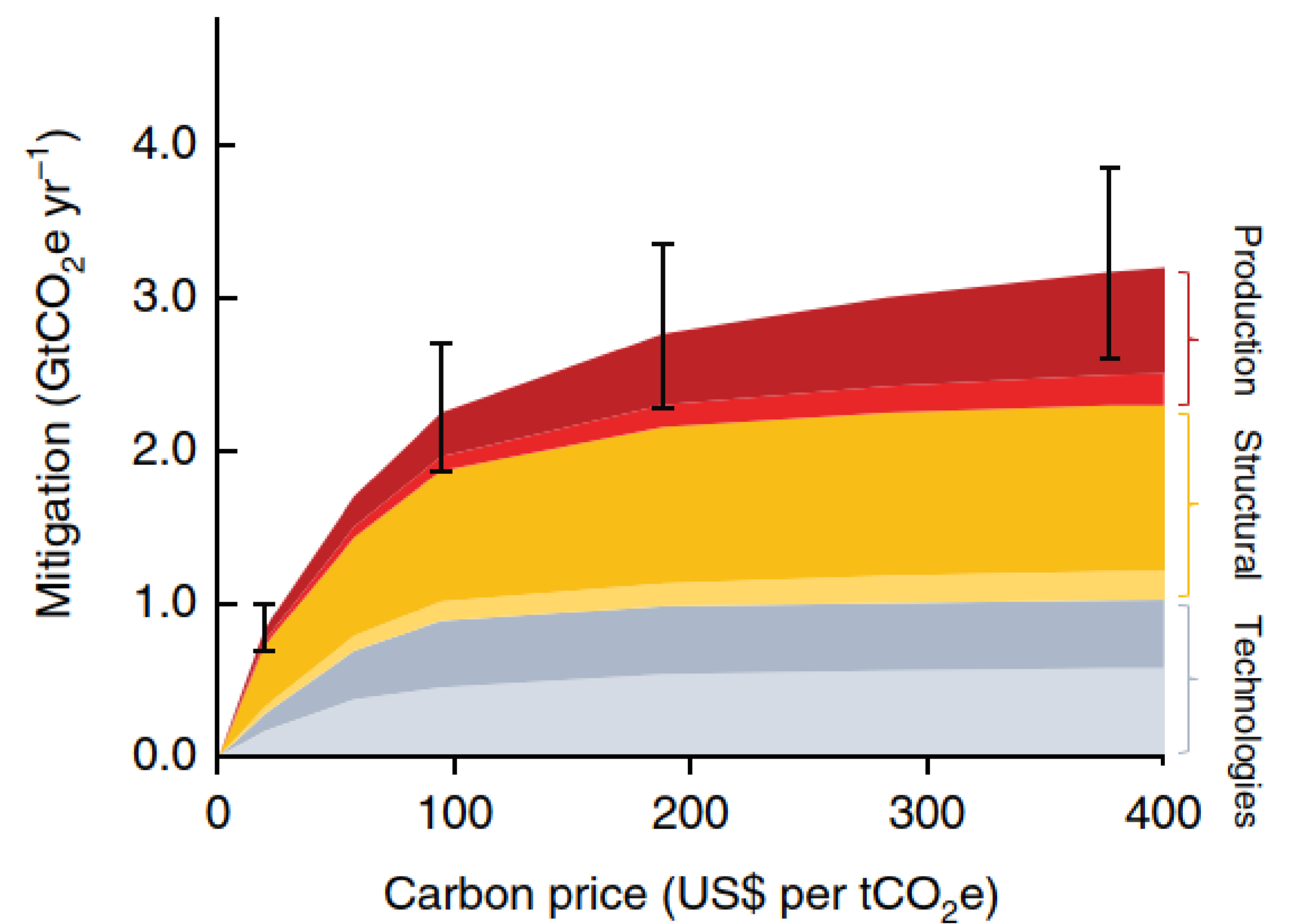
# WP7: Development of ex-ante macro-level models

Lead: IIASA - International Institute for Applied Systems Analysis, Laxenburg, Austria

Institutions involved: EC, WUR, PBL, UPS, UB, INRAE, TI, JRC

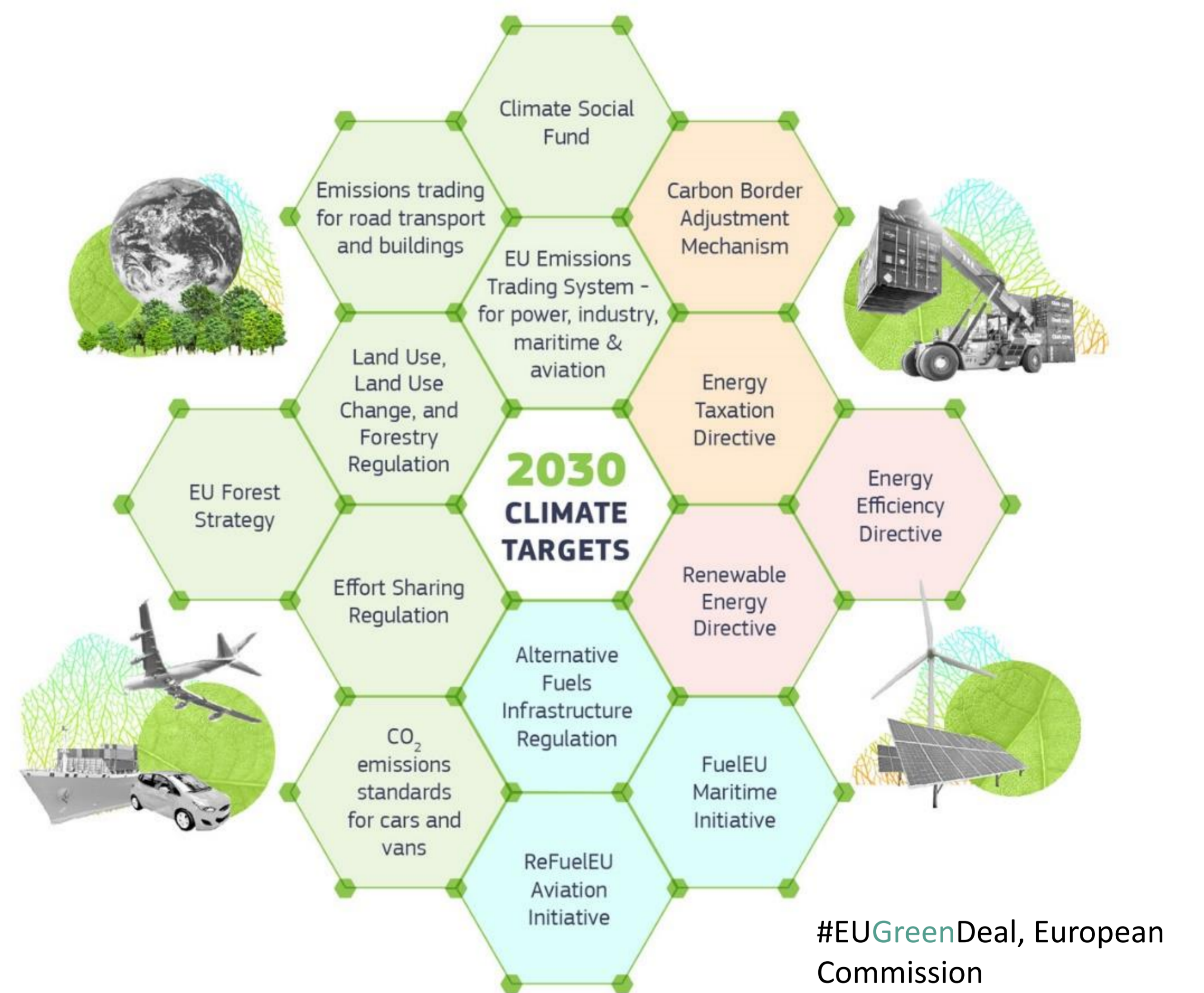
## What?

- **Models: CAPRI, MAGNET, IMAGE, GLOBIOM**
  - Agriculture, forest, other land use
  - Country level, NUTS2
  - Parameterized based on
    - Historical data
    - Biophysical (process-based) models
  - Forward looking (2020-2050/2100)
  - Impact Assessments (CAP, Climate policies), Pathway development, Solution space



## Why?

- Make ex-ante models fit for Green Deal policies
- Improve representation of management systems to include:
  - Organic farming
  - Climate-smart forest management
  - Peatland restoration
  - Grassland management
- Improve spatial representation of ex-ante models to link with high-resolution models



## How?

- Bio-physical and ex-post models to inform large-scale models and parameterize new management systems (WP4/5)
- Integrate newly developed land use and management database (WP 2)
- Develop interfaces within the LAMASUS toolbox for model coupling (WP6)

